

SPREADER MS



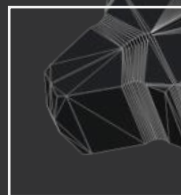
EASE OF USE OF THE CONTROL HANDLE

UNIQUE BATTERY PROTECTION

PROTECTION PADS

18,3 Kg

THE STRONGEST OPENING
SPREADING FORCE IN ITS CLASS



SPECIAL TIPS
MAX SPREADING FORCE 171 Kn

SPREADER MS



The MS spreader is the ideal tool for door openings or dashboard lifting using the chain set, after road accidents.

This tool has the **strongest opening spreading force** in its class when the arms are closed. Moreover, the angle of the spreader is limited to 110 degrees for optimal safety.

Its thin arm tips will also insert easily in narrow gaps.

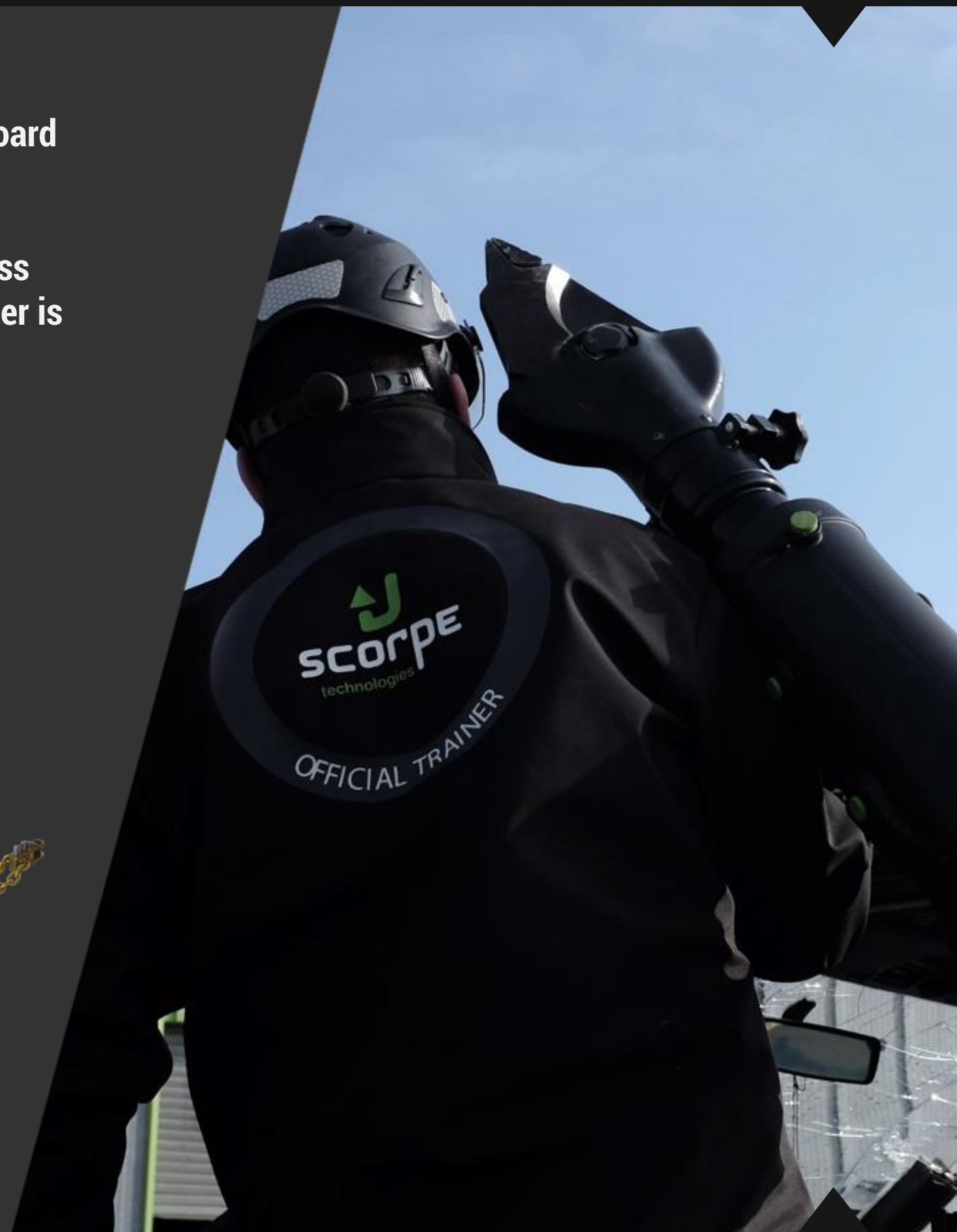
ACCESSORIES

2 locks with chain, 2 chains of traction with a hook.

Locking system with pin and self-locking.

Adaptation and positioning by quick tightening

Maximum working force:	60 kN
Dimensions of chain links:	10 x 30 mm
Chain resistance:	74 kN
Strength of links:	74 Kn
Length of a chain	1.8m
Weight:	13.8 kg





AUTONOMY

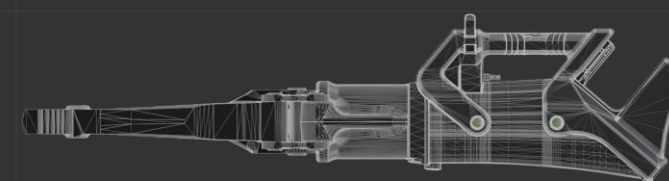
- ▶ Long operating time thanks to 5.0 Ah 28V capacity Li-ion battery
- ▶ Same battery fits all tools
- ▶ Batteries available at any Milwaukee dealer throughout the world

ROBUST

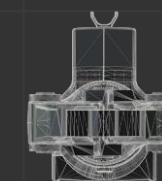
- ▶ Fiber reinforced housing fitted with pads for hardest use
- ▶ Special housing design for extra battery protection

ERGONOMY

- ▶ Lightweight and balanced tool
- ▶ Special control handle for fine tuning and ease of use
- ▶ Non slip handle grip for solid tool utilization
- ▶ Intuitive ON/OFF switch with incorporated light

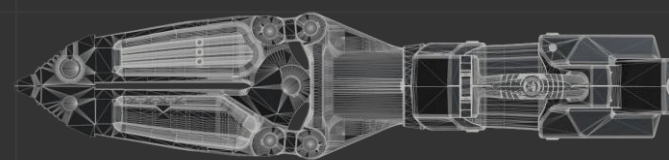


956 mm



215 mm

240 mm



TECHNICAL CHARACTERISTICS

Spreading distance	610 mm
Spreading force	38 - 171 Kn
Squeezing force	76,3 Kn
Weight without battery	18.3 kg
L x l x H	956 X 215 X 240 mm
Working pressure	700 bar
EN Class	AS35/600 - 18