

CUTTER MC



EASE OF USE OF THE CONTROL HANDLE

UNIQUE BATTERY PROTECTION

360° ROTATABLE & DETACHABLE HANDLE

PROTECTION PADS

UNIQUE FORGED **CURVED BLADES**
MAX CUTTING FORCE **781 Kn**

20,6 Kg

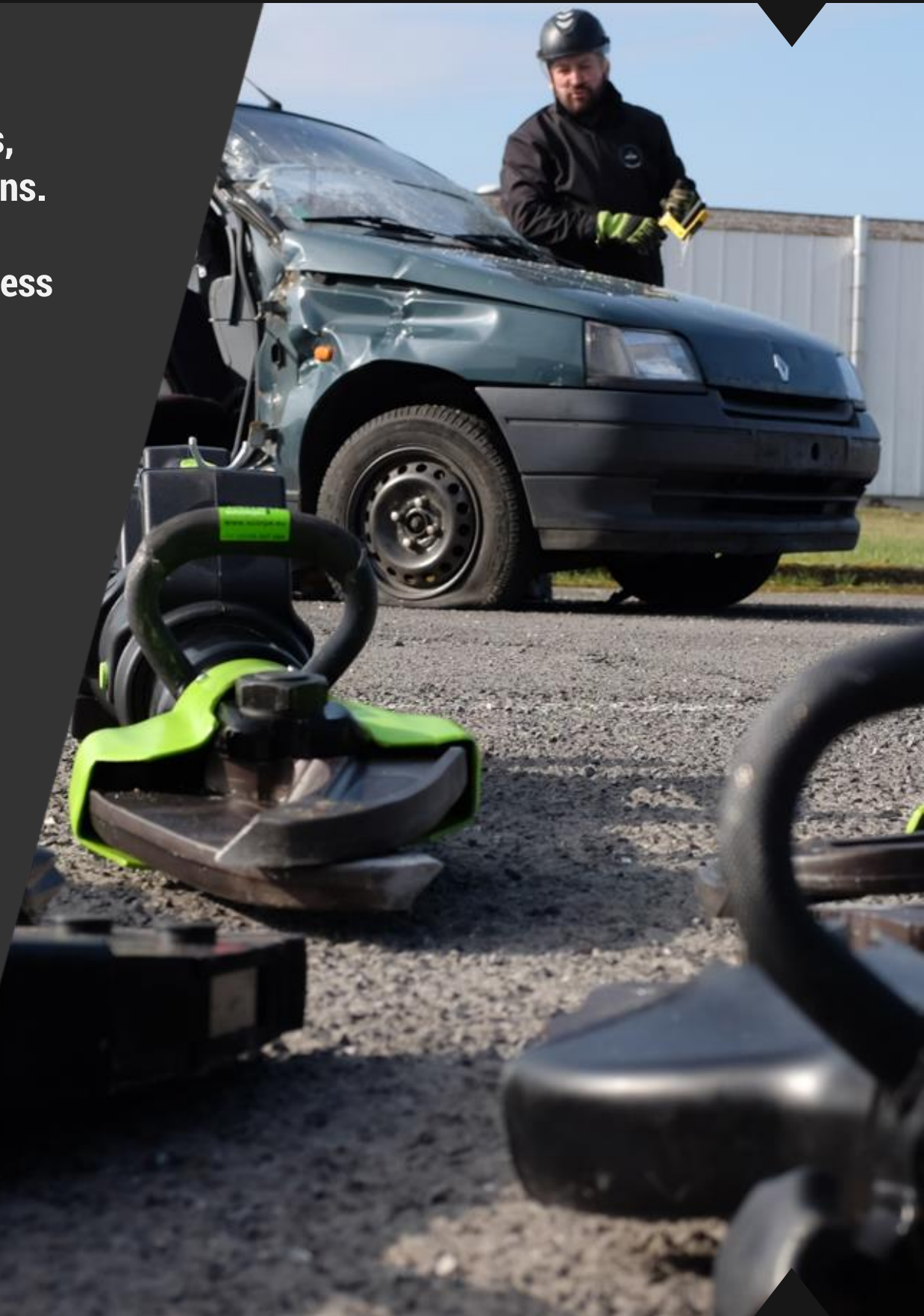
SPECIAL GEOMETRY OF THE BLADES

CUTTER MC



The MC cutter is the big brother of the SC model and is used for interventions in rescue operations for rail and road traffic accidents, cutting of metal constructions, vehicle parts, pipes and steel sections.

It is a very reliable tool to use thanks to the type of steel and thickness of its blades. It also boasts itself with great and safe cutting performances thanks to the **special geometry of the blades**.





AUTONOMY

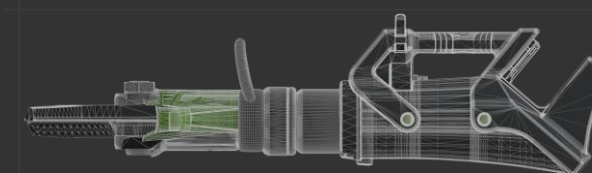
- ▶ Long operating time thanks to 5.0 Ah 28V capacity Li-ion battery
- ▶ Same battery fits all tools
- ▶ Batteries available at any Milwaukee dealer throughout the world

ROBUST

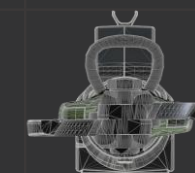
- ▶ Fiber reinforced housing fitted with pads for hardest use
- ▶ Special housing design for extra battery protection
- ▶ Forged curved steel blades

ERGONOMY

- ▶ 360° rotatable and detachable handle – ideal for restricted confined space operation
- ▶ Lightweight and balanced tool
- ▶ Special control handle for fine tuning and ease of use
- ▶ Non slip handle grip for solid tool utilization
- ▶ Intuitive ON/OFF switch with incorporated light

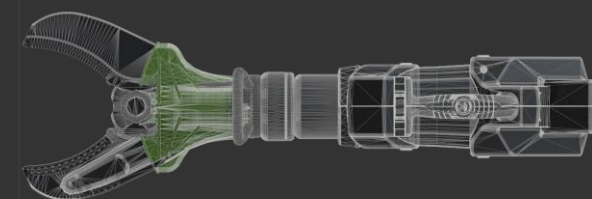


872 mm



232 mm

240 mm



TECHNICAL CHARACTERISTICS

Cutting force	781 Kn
Cutting force (round steel bar)	35 mm
Weight without battery	20.6 kg
L x l x H	872 X 232 X 240 mm
Working pressure	700 bar
EN Class	BC 180 I – 21 [1J-2K-3I-4J-5J]