

# *Product Catalogue 2016 / 2017*



## ***Jason Cooper***

Phone: 0413 935 463

Fax: 08 8327 2183

26 Shearer Drive

Seaford, S.A. 5169

P.O. Box 305

McLaren Vale, S.A. 5171

[sales@firetrucksaustralia.com.au](mailto:sales@firetrucksaustralia.com.au)

## ***Peter Andrews***

Phone: 0488 070 025

Fax: 08 8327 2183

26 Shearer Drive

Seaford, S.A. 5169

P.O. Box 305

McLaren Vale, S.A. 5171

[peter@firetrucksaustralia.com.au](mailto:peter@firetrucksaustralia.com.au)

## *Page Reference*

1. **Contents**
2. **Gloves.**
3. **Goggles.**
4. **Footwear.**
5. **Eye-wear (Safety Glasses).**
6. **Respiratory Protection (P2 Masks).**
7. **Helmets.**
8. **Delivery Hose (Coupled).**
9. **Delivery Hose (Hose Only).**
10. **Couplings, Keys & Washers.**
11. **Adaptors & Suction Strainers.**
12. **Nozzles / Knapsacks.**
13. **Hose Patching & Repair Equipment.**
14. **Spill Control Absorbents.**
15. **Fire Extinguishers.**
16. **Fuel Storage / Handling.**
17. **Portable Fire Pumps & Repairs.**
18. **Road Safety & Hazard Tapes.**
19. **First Aid & Patient Care.**
20. **Hand Tools & Foam Concentrates.**
21. **Appliance Items – Mounting Brackets.**
22. **LED Work Lights.**
23. **Whelen - Pioneer - Super-LED® Scene Lighting.**
24. **LED Driving Lights.**
25. **LED Driving Light Bars.**
26. **WHELEN® Emergency Lighting.**
27. **Whelen Appliance Light Bars (Full Length).**
28. **Whelen Justice Light Bars (Full Length).**
29. **Whelen Mini Light Bars.**
30. **Whelen Surface Mount Flashers (24VDC).**
31. **Whelen Surface Mount Flashers (12VDC).**
32. **Whelen LED Beacons.**
33. **Whelen –3000 Series & Pioneer™ Series and Pioneer Plus™ Series**
34. **Whelen Siren Units.**
35. **Intercom / P.A. Systems.**
36. **Siren Speakers & Siren Units.**
37. **Town / Fire Station Sirens.**

*\* All orders over \$1000 Plus G.S.T. receive Freight F.I.S. (Free-Into-Store)*

## Gloves

Part #	Product Description
<b>Fire Fighting Gloves</b>	
<b>TAG – Rural</b>	
TAG-L1 - (*) (*) = XS - XXXL	TAG - Rain Man - Level 1 Fire Glove A.S. 2161.6 - Gripper Pads / Long Cuff / Kevlar Stitched
<b>TAG – Structural</b>	
TAG-3s - (*) (*) = XS - XXXL	TAG - 3's - Level 3 Structural Fire Glove A.S. 2161.6 Type 3 - Perelle Moisture Barrier, Re-enforced Palm, Kevlar Stitched
<b>ESKA – WARRIOR - Level 3 Structural Fire Glove</b>	
EW8034 - (*) (*) = XXS - XXXL	ESKA Warrior - Structural Firefighting Glove A.S. 2161.6 - Moisture Barrier / Long Cuff
<b>RCR - Cut Level 5 Gloves</b>	
<b>Hi-Lite neon - Cut 5 - EN388 (4.5.4.3.)</b>	
G7903M	Hi-Lite neon - Cut 5 - EN388 (4.5.4.3.) - Medium
G7903L	Hi-Lite neon - Cut 5 - EN388 (4.5.4.3.) - Large
G7903XL	Hi-Lite neon - Cut 5 - EN388 (4.5.4.3.) - Extra Large
G7903XXL	Hi-Lite neon - Cut 5 - EN388 (4.5.4.3.) - 2 X Large
<b>Max 5 Touchscreen - EN388 (4.5.4.3.) - Cut Level 5</b>	
G5TPU7	Max 5 Touchscreen - Cut 5 - EN388 (4.5.4.4.) - Small
G5TPU8	Max 5 Touchscreen - Cut 5 - EN388 (4.5.4.4.) - Medium
G5TPU9	Max 5 Touchscreen - Cut 5 - EN388 (4.5.4.4.) - Large
G5TPU10	Max 5 Touchscreen - Cut 5 - EN388 (4.5.4.4.) - Extra Large
G5TPU11	Max 5 Touchscreen - Cut 5 - EN388 (4.5.4.4.) - 2 X Large
<b>Orange Nitrile (Surgical)</b>	
160030	TGC® Workgear Orange Nitrile - Box 100 - Size (XS)
160031	TGC® Workgear Orange Nitrile - Box 100 - Size (S)
160032	TGC® Workgear Orange Nitrile - Box 100 - Size (M)
160033	TGC® Workgear Orange Nitrile - Box 100 - Size (L)
160034	TGC® Workgear Orange Nitrile - Box 100 - Size (XL)



Orange Nitrile (Black Lightning)



TAG – Rural



ESKA Warrior



Max 5 Touchscreen - Cut 5



## Goggles

Part #	Product Description
<b>Protective Goggles</b>	
<b>TAG</b>	
TAG-K1	TAG - Standard Protective Goggle - Vented. Inc., Protective Bag & Std AS/NZ 1337:1992 - Clear Lens.
TAG-K3	<b>TAG – RED Fire Fighter Protective Goggle - Non-Vented.</b> Inc., Protective Bag & Std AS/NZ 1337:1992 - Clear Lens.
Options -	<ul style="list-style-type: none"> <li>• Clear Lens.</li> <li>• Amber Lens.</li> <li>• Smoke Lens.</li> </ul>
803SHBCA	<b>803 Firefighter Goggle - Clear Lens</b> Face hugging goggle with adjustable strap & OP/CL Ventilation (A.S. 1337)
803SHBSDA	803 Firefighter Goggle - Smoke Lens Face hugging goggle with adjustable strap & OP/CL Ventilation (A.S. 1337)

**TAG Fire Fighter (A.S. 1337)**



**803 Firefighter (A.S. 1337)**



**Replacement Lenses (A.S. 1337)**



### Notes:

---

---

---

---

---

---



## Taipan Footwear

Part #	Product Description
<b>Fire Fighting Footwear</b>	
<b>Rural</b>	
5071	WILDLAND 8" Inch (180mm) - Laced / No Zip
5074	WILDLAND 6" Inch (150mm) - Front Zip
<b>Structural</b>	
5072	STRUCTURAL 8" Inch (180mm) - Front Zip
<b>Accessories</b>	
8000	Suit 8" Inch (180mm) Footwear – Small Fits Boot Size: 3 to 7.5
8001	Suit 8" Inch (180mm) Footwear – Medium Fits Boot Size: 3 to 7.5
8002	Suit 8" Inch (180mm) Footwear – Large Fits Boot Size: 3 to 7.5
8008	Laces (Fire Resistant) - Suit 8" Inch (180mm) Footwear
8020	Taipan Boot Polish (Fire Resistant)

**\* Other Styles available upon request.**



### Taipan Boot Polish

- Fire Retardant and Waterproofs Leather
- Keeps Leather Soft
- Shines & Protects
- Lubricates Zippers



### Taipan 5071 (Wildland)

- A.S. / N.Z.S. 4821: 2006
- 8 holes' front lace - up
- Steel cap
- Sizes 2 to 14 (incl ½ Sizes)
- DDR ® Sole (300 °C Heat & Oil Resistant)
- Fire retardant and waterproof leather



### Taipan 5072 (Structural)

- A.S. / N.Z.S. 4821: 2006
- Classification 1 type 2
- 8 holes' lace in front zipper
- Steel cap
- Steel midsole (flexible)
- Sizes 2 to 14 (incl ½ Sizes)
- DDR ® Sole (300 °C Heat & Oil Resistant)

## Safety Glasses

Part #	Product Description
<b>Protective Glasses</b> Certified to AS/NZS 1337:2002 Medium Velocity Impact	
<b>Cobra</b>	
12SCCA	<b>Cobra - Clear (Anti Fog)</b> Certified to AS/NZS 1337:2002 Medium Velocity Impact
12SGSDA	<b>Cobra - Smoke (Anti Fog)</b> Certified to AS/NZS 1337:2002 Medium Velocity Impact
12SY Y	<b>Cobra - Amber</b> Certified to AS/NZS 1337:2002 Medium Velocity Impact
<b>Granite</b>	
223SCCA	<b>Granite - Clear (Anti Fog)</b> Certified to AS/NZS 1337:2002 Medium Velocity Impact
223SGSD	<b>Granite - Smoke</b> Certified to AS/NZS 1337:2002 Medium Velocity Impact
223SGBM	<b>Granite - Blue Mirror</b> Certified to AS/NZS 1337:2002 Medium Velocity Impact
223SY Y	<b>Granite - Amber</b> Certified to AS/NZS 1337:2002 Medium Velocity Impact
<b>Alpha (Over Specs)</b>	
01SCCU	<b>Alpha - Clear</b> Certified to AS/NZS 1337:2002 Medium Velocity Impact
01SGSDU	<b>Alpha - Smoke</b> Certified to AS/NZS 1337:2002 Medium Velocity Impact
01SY YU	<b>Alpha - Amber</b> Certified to AS/NZS 1337:2002 Medium Velocity Impact



**Cobra**

*The Cobra Safety Glasses are available in a range of lens tint the well-designed Cobra is a great pair of safety glasses for all day wearing.*

- Available in Clear, Smoke and Amber lens.
- Australian Standards, Medium Impact AS/NZS1337.1



**Granite**

*Granite - Safety Glasses Lightweight Great wrap around design Soft touch arms, UV Protection & Anti Fog*

- Available in a range of lens tint, the Granite comes with soft touch arms that are easy on the temple.
- Available in Clear, Smoke, Blue Mirror and Amber lens
- Australian Standards, Medium Impact AS/NZS1337.1



**Alpha**

*The Alpha fits over safety glasses fits over prescription glasses and provides you with medium impact protection.*

- Available in Clear, Smoke and Amber lens.
- Australian Standards, Medium Impact AS/NZS1337.1

*\* Various other styles available upon request*

## P2 Masks

Part #	Product Description
<b>P2 Disposable Masks</b>	
<b>YHS</b>	
DM3	Cup Shape - Activated Charcoal layer, Exhalation Valve
<b>DM30</b>	<b>Vertical Fold - Activated Charcoal layer, Exhalation Valve, Individually Wrapped.</b>
DM3000	Horizontal Fold - Activated Charcoal layer, Exhalation Valve, Individually Wrapped.
HMCKIT	YHS - Chemical Kit
V-7800 ABEK1+P2	YHS - Chemical Kit - Replacement: 1 Pair ABEK1+P2 Pre-filter pads
V-7800 P2	YHS - Chemical Kit - Replacement: 2 Pair P2 Pre-filter pads



### DM3

- Cup Style
- Activated Charcoal layer
- Exhalation Valve



### DM30

- Vertical Fold
- Individually Wrapped
- Exhalation Valve
- Activated Charcoal layer



### DM3000

- Horizontal Fold
- Individually Wrapped
- Exhalation Valve
- Activated Charcoal layer



### HMCKIT

- 1 Resealable storage case
- 2 pair x #V-7800 P2 Pre filter pads
- 1 Pair x #V-7800 ABEK1+P2 Pre-filter pads
- #V-800 Half Mask Medium size



## **Helmets**

<b>Part #</b>	<b>Product Description</b>
<b>Rural - Fire Helmets</b>	
<b>Pacific / Scott Aspen</b>	
Pacific	Various models available for your application
Scott Aspen	Various models available for your application

<b>Part #</b>	<b>Product Description</b>
<b>Structural - Fire Helmets</b>	
<b>PAB, Bullard, Pacific, Scott Aspen</b>	
Bullard	Various models available for your application
Pacific	Various models available for your application
Scott Aspen	Various models available for your application

<b>Part #</b>	<b>Product Description</b>
<b>Rescue Helmets</b>	
<b>PAB, Scott Aspen, Pacific</b>	
Scott Aspen	Various models available for your application
Pacific	Various models available for your application





## Delivery Hoses (Coupled)

Part #	Product Description
<b>Hoses – Made in Australia!</b>	
<b>Synthetic Weave (Canvas) - Peculating, Class H (Forestry)</b>	
SAB25FOR	Sabre, 25mm x 30m Fitted with ¼ Turn Forestry Couplings (Black Anodized)
SAB38FOR	Sabre, 38mm x 30m Fitted with ¼ Turn Forestry Couplings (Black Anodized)
SAFY38FOR	<b>Sabre Forest, 38mm x 30m (Yellow)</b> Fitted with ¼ Turn Forestry Couplings (Black Anodized)
<b>Synthetic Weave (Canvas) - Non Peculating, Class H</b>	
EXC25FOR	Excalibur, 25mm x 30m Fitted with ¼ Turn Forestry Couplings (Black Anodized)
EXC38FOR	Excalibur, 38mm x 30m Fitted with ¼ Turn Forestry Couplings (Black Anodized)
<b>Extruded - Non Peculating, Class H (RED Rubber)</b>	
RAP25FOR	Rapier (Red) - 25mm x 30m Fitted with ¼ Turn Forestry Couplings (Black Anodized)
RAP38FOR	<b>Rapier (Red) - 38mm x 30m</b> Fitted with ¼ Turn Forestry Couplings (Black Anodized)
RAP65ST	<b>Rapier (Red) - 65mm x 30m</b> Fitted with 65mm Storz Couplings
<b>Filler (Short 7.5m), Class H</b>	
RAP7.5X65ST	Rapier (Red) - 65mm x 7.5m Fitted with 65mm Storz Couplings
<b>Crew Deck Lines / Dry Man Lines</b>	
RAP25CREW	<b>Extruded - Non Peculating, Class H (RED Rubber)</b> <b>Rapier (Red) - 25mm x 3m</b> Fitted with ¼ Turn Forestry Couplings (Black Anodized)
EXC25CREW	<b>Synthetic Weave (Canvas) - Non Peculating, Class H</b> <b>Excalibur - 25mm x 3m</b> Fitted with ¼ Turn Forestry Couplings (Black Anodized)
<b>Suction Hoses</b>	
FTA-2.4-65ST	2.4m X 65mm Grey Suction - Storz 65mm Couplings Fitted
FTA-3.6-65ST	3.6m X 65mm Grey Suction - Storz 65mm Couplings Fitted
FTA-3.0-100ST	3.0m X 100mm Grey Suction - Storz 100mm Couplings Fitted
FTA-3.6-100ST	3.6m X 100mm Grey Suction - Storz 100mm Couplings Fitted
FTA-**-*****	Suction Hoses also made to order, 25 to 150mm & various couplings available. Please call for your application.
<b>Hose Reel</b>	
HOR25X30BSP	Goodyear Horizon 25mm x 30m (Fitted – Male & Female BSP Couplings)

\* Extruded Rubber hose also available in other colours and brands upon request.



### ***Delivery Hoses (Hose Only)***

Part #	Product Description
<b>“Lay-flat” - Delivery Hoses – No Couplings</b>	
<b><i>Synthetic Weave (Canvas) - Peculating, Class H (Forestry)</i></b>	
SAB25	Sabre, 25mm x 30m
SAB38	Sabre, 38mm x 30m
<b><i>Synthetic Weave (Canvas) - Non Peculating, Class H</i></b>	
EXC25	Excalibur, 25mm x 30m
EXC38	Excalibur, 38mm x 30m
<b><i>Extruded - Non Peculating, Class H (RED Rubber)</i></b>	
RAP25	Rapier (Red) - 25mm x 30m
RAP38	Rapier (Red) - 38mm x 30m
RAP65	Rapier (Red) - 65mm x 30m

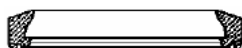
\* *Extruded Rubber hose also available in other colours, sizes and brands upon request.*

**Notes:**



## Couplings, Keys & Washers

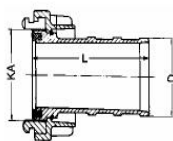
Part #	Product Description
<b>Couplings suit - Lay-Flat &amp; Suction Hoses</b>	
<b>SAFB Thread - Couplings (Pair)</b>	
SAFB-HT-38	SAFB Couplings (Band-it Tail) Polished Alloy - Suit 38mm Hose (Pair)
SAFB-HT-64	SAFB Couplings (Band-it Tail) Polished Alloy - Suit 64mm Hose (Pair)
<b>Storz - Couplings (Pair)</b>	
ST38HOSETAIL	65 Storz Couplings (Band-it Tail) Alloy - Suit 38mm Hose
ST65HOSETAIL	<b>65 Storz Couplings (Band-it Tail) Alloy - Suit 65mm Hose</b>
ST100HOSETAIL	<b>100 Storz Couplings (Band-it Tail) Alloy - Suit 100mm Hose</b>
ST150HOSETAIL	150 Storz Couplings (Band-it Tail) Alloy - Suit 150mm Hose
<b>*65mm Coupling Clamps Available: See next page (Page 11)</b>	
<b>(WAJAX) ¼ Turn Forestry - Couplings (Pair)</b>	
FORRHQK25	25mm Expansion Ring couplings (Pair) ULC Approved
FORRHQK38	38mm Expansion Ring couplings (Pair) ULC Approved
<b>Coupling Keys</b>	
FS7076	<b>Combination Spanner - Yellow - SA (Storz, SAFB, Hyd / Cover)</b>
WASPAN-4	¼ Turn Forestry - Coupling Key - Alloy
HYD-KEY	S.A. Combination Key - Brass
STZSPAN-B	Storz 65 Coupling Spanner Steel - 71-089066-50
STZSPAN-ABC	Storz 100 Coupling Spanner Steel - 71-089066-50
<b>Coupling Washers</b>	
WA-WSH	¼ Turn Forestry - Grooved Coupling Face Washer
SA-WASH	SAFB Coupling Washer / Suits S.A. Stand Pipe Base
91-001081-00	Storz 65 - Delivery Washer - Nitrile Rubber - <b>Black</b>
91-002081-01	Storz 65 - Combination (Suction) Washer - Nitrile Rubber - <b>White</b>
91-002115-01	Storz 100 - Combination (Suction) Washer - Nitrile Rubber - <b>White</b>
91-002148-01	Storz 125 - Combination (Suction) Washer - Nitrile Rubber - <b>White</b>
91-002160-01	Storz 150 - Combination (Suction) Washer - Nitrile Rubber - <b>White</b>



Storz Delivery Washer (Black)



Storz Combination Washer (White)



Storz Couplings



Storz Keys



Combination Spanner  
Yellow  
S.A. (Storz, SAFB, Hyd / Cover)

## Adaptors & Strainers

Part #	Product Description
<b>Adaptors</b>	
<b>Storz 65 to SAFB Thread – Alloy</b>	
SAFBM-65ST	SAFB Male to 65 Storz - Alloy Combination Washer - Nitrile Rubber - White
SAFBF-65ST	SAFB Female to 65 Storz - Alloy Combination Washer - Nitrile Rubber - White
<b>Storz to ¼ Turn Forestry – Alloy</b>	
65ST-WA	65 Storz to 38mm Bore ¼ Turn Forestry - Alloy
<b>¼ Turn Forestry – Alloy (Black Anodized)</b>	
FORRHQK0.75F	19mm BSP Female to ¼ Turn Forestry – Alloy
FORRHQK0.75M	19mm BSP Male to ¼ Turn Forestry – Alloy
FORRHQK1F	25mm BSP Female to ¼ Turn Forestry – Alloy
FORRHQK1M	25mm BSP Male to ¼ Turn Forestry – Alloy
FORRHQK15F	38mm BSP Female to ¼ Turn Forestry – Alloy
FORRHQK15M	38mm BSP Male to ¼ Turn Forestry – Alloy
<b>Mixed Adaptors</b>	
Special made to order Adaptors	
<ul style="list-style-type: none"> <li>• Camloc Male / Female to 65 Storz</li> <li>• Camloc Male / Female to 100 Storz</li> <li>• Camloc Male / Female to SAFB Male / Female</li> <li>• Camloc Male / Female to SAFB Female / Female</li> </ul>	
<i>Please call for any adaptor that may be needed for your application.</i>	
<b>Foot Valves &amp; Strainer Basket</b>	
FOOT65STZ	65 Storz to 65mm Foot Valve
FDS2.5-ST	Floating Strainer 65mm
SBSKT	Suction Strainer Basket – Suit 65 to 100mm Foot Valves
<b>65 Storz Coupling Clamps</b>	
ST65ASVCL	65mm Storz Aluminum Clamping System – Per End



(WAJAX) ¼ Turn Forestry



SAFB Thread to Storz



Storz to ¼ Turn Forestry



Storz Foot Valve



Coupling Clamps





Floating Strainer 65mm





## Nozzles - Selectable Gallonage & Automatic

Part #	Product Description
 <b>Task Force Tips – Call for the best pricing available</b>	
<b>1" (25mm) &amp; 1.5" (38mm) ULTIMATIC 125 SERIES, Automatic</b>	
TFT*****	1" (25mm) & 1.5" (38mm) ULTIMATIC 125 SERIES 10-125 GPM (40-500 l/min) 10-100 GPM (40-400 l/min) low pressure Automatic – Various Models
 <b>Protek – Selectable Flow</b>	
<b>1" (25mm) Protek</b>	
PRO360	# 360 - 19,37,90,150 L/Min
PRO361	# 361 - 50,100,150, 230 L/Min
<b>1.5" (38mm) Protek</b>	
PRO366	# 366 - 115, 230, 360, 475 L/Min
<b>Mop Up Nozzles – Manufactured in Australia!</b>	
FD20FOR	Mop-Up Nozzle - Fog / Jet Comes with Forestry Adaptor
FD25FOR	Mop-Up Nozzle - Fog / Jet Comes with Forestry Adaptor
FD38FOR	Industrial Nozzle - Fog / Jet Comes with Forestry Adaptor
<b>Nozzle Repair service also available, please call for further information on repairs and services</b>	



**Mop Up Nozzles**  
 (FD20FOR Pictured)



**Selectable Flow Nozzles**

## Knapsacks

GENFO	GENFO Collapsible 19 Litre Knapsack with double acting hand operated water pump
GENLID	GENFO - Lid & Seal



## HOSE PATCHING / REPAIR

Part #	Product Description
<b>Synthetic Weave (Canvas) Hose Repair</b>	
<b>Patches &amp; Equipment</b>	
PATCH-35	Hose Repair Patch (35mm Dia) Pack of 10
PATCH-50	Hose Repair Patch (50mm Dia) Pack of 10
PATCH-65	Hose Repair Patch (65mm Dia) Pack of 10
TEFLON	Teflon Shield – 200 x 100mm Heat Resistant, Non-Stick Patch Shield
VULCANITE	Vulcanite – Heat Activated Patch Adhesive
TALC	Talcum Powder c/w applicator
HOSE-KIT	Hose Repair Kit: Contains 10 of each size of patches, Vulcanite, Talc, Shield and Instructions
<b>Extruded (Red Rubber) Hose Repair</b>	
<b>Patches</b>	
STEN3223	Stenor Patches 12 x Internal / 12 x External
<b>Hose repair Equipment</b>	
<b>Banding (Band-iT)</b>	
C001	Band-iT – Manual Banding Machine
C050	Band-iT – Heavy Duty Adaptor (For Use with JS Series Preformed Bands)
JS202	Band-iT – Preformed Bands (Width: 9.6 / Dia: 34mm) 100 Bands Per Box <b>(Suits 25mm Lay-Flay Hoses)</b>
JS236	Band-iT – Preformed Bands (Width: 12.7 / Dia: 44mm) 100 Bands Per Box <b>(Suits all 25mm &amp; 38mm Hoses)</b>
JS234	Band-iT – Preformed Bands (Width: 12.7 / Dia: 76mm) 100 Bands Per Box <b>(Suits all 65mm Hoses)</b>
<b>* Hose Bands also available in single units – Please call for pricing *</b>	
<b>Patching</b>	
HPAT-MAC	Vulcanizing Machine (All Hose & Patch Repairs)

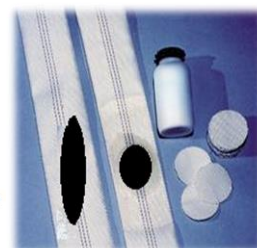


Use with

BAND-IT® Tool on the BAND-IT®  
Junior® Smooth ID Preformed Clamps



Junior® Smooth ID Clamp



## Spill Control / Absorbents

Part #	Product Description
<b>Prencos Spill Control</b>	
<b>Absorbents</b>	
AMS/10	Spill Stop Econo 10Kg Bag Mineral diatomite absorbent
ASS/10	Spill Sweep 10Kg Bag Organic bio-degradable & bio-active absorbent
PDR50	PLUG n DIKE Emergency Leak Sealant Putty - 650G Ready-mix
Also Available: Specialized spill kits, Booms, Pillows & Spill Station Kits Pallet quantities also available, with delivery to your door.	





## Fire Extinguishers

Part #	Product Description
<b>Water &amp; Foam</b>	
BF90AW	9.0Lt - Water 2A Rating, Inc. Wall Bracket
BF90AF	9.0Lt - A.F.F.F. (Foam) 3A:20B Rating, Inc. Wall Bracket
<b>Dry Powder (A.B.E.)</b>	
BF10ABE	1.0Kg - A.B.E. (Powder Type) 1A:20B: E Rating, Inc. Vehicle Bracket
BF15ABE	1.5Kg - A.B.E. (Powder Type) 2A:20B: E Rating, Inc. Vehicle Bracket
BF25ABE	2.5Kg - A.B.E. (Powder Type), With Hose 3A:40B: E Rating, Inc. Vehicle Bracket
BF45ABE	4.5Kg - A.B.E. (Powder Type), With Hose 3A:60B: E Rating, Inc. Wall Bracket
BF90ABE	9.0Kg - A.B.E. (Powder Type), With Hose 6A:80B: E Rating, Inc. Wall Bracket
<b>Co2 (B.E.)</b>	
FP35CO2A	3.5Kg - Co2 5B: E Rating, Inc. Wall Bracket (Aluminium Cylinder)
FP50CO2A	5.0Kg - Co2 5B: E Rating, Inc. Wall Bracket (Aluminium Cylinder)
<b>Fire Blankets</b>	
FB11	Fire Blanket 1.0m x 1.0m
FB1218	Fire Blanket 1.2m x 1.8m
<b>Hose Reel</b>	
HRS035A	Fire Hose Reel – 19mm x 36m
Any other sizes or Types (Not Listed) Please call for assistance	

### Portable Fire Extinguisher Guide

T +61 3 8892 3131  
F +61 3 8892 3132  
E shop@fpaa.com.au  
E technical@fpaa.com.au  
W www.fpaa.com.au



		Type of Fire, Class and Suitability						Comments	D Metal Fires
Pre 1997	Current	Extinguishing Agent	A Wood Paper Plastic	B Flammable & Combustible Liquids	C Flammable Gases	E Electrically Energised Equipment	F Cooking Oils and Fats		
		Water	✓	✗	✗	✗	✗	Dangerous if used on flammable liquid, energised electrical equipment and cooking oil/fat fires	Use only special purpose extinguishers and seek expert advice.
		Wet Chemical	✓	✗	✗	✗	✓	Dangerous if used on energised electrical equipment	
		Foam <sup>1</sup>	✓	✓	✗	✗	LIMITED	Dangerous if used on energised electrical equipment <sup>1</sup> Solvents such as alcohol or acetone mix with water and therefore require special foam	
		Powder	(ABE) ✓ (BE) ✗	✓	✓	✓	✗	Look carefully at the extinguisher to determine if it is a BE or ABE unit as the capability is different	
		Carbon Dioxide	LIMITED	LIMITED	✗	✓	✗	Not suitable for outdoor use or smouldering deep seated Class A Fires	
		Vaporising Liquid	✓	LIMITED	LIMITED	✓	✗	Check the characteristics of the specific extinguishing agent. 5 Yearly servicing must be done by ODS & SGG licenced persons.	
		Fire Blanket	LIMITED <sup>2</sup>	LIMITED	✗	✗	✓	<sup>2</sup> Fire blankets may be used to control a fire in clothes being worn by a person or as a thermal barrier against radiated heat.	
		Fire Hose Reel	✓	✗	✗	✗	✗	Dangerous if used on flammable liquid, energised electrical equipment and cooking oil/fat fires	

LEGEND  
✓ = the class or classes in which agent is most effective  
✗ = not recommended for this class of fire  
For more information go to: www.fpaa.com.au

LIMITED = indicates the extinguishing agent is not the agent of choice for the class of fire, but it may have a limited extinguishing capability

© FPA Australia ABN 30 005 366 576



## Fuel / Liquid Storage & Labelling

Part #	Product Description
<b>Pro-Quip A.F.A.C. Fuel Containers – 20 Lt</b>	
PRO1097	20L AFAC Red Metal Jerry Can (UNLEADED)
PRO1150	20L AFAC Orange Metal Jerry Can (ETHANOL)
PRO1151	20L AFAC Olive Yellow Metal Jerry Can (DIESEL)
PRO1152	20L AFAC Bottle Green Metal Jerry Can (2 Stroke 25:1)
PRO1153	20L AFAC Shamrock Green Metal Jerry Can (Drip Torch)
PRO1154	20L AFAC Bluebell Metal Jerry Can (AD Blue)
PRO1155	20L AFAC Bright Blue Metal Jerry Can (Chain & Bar Oil)
PRO1156	20L AFAC Powder Blue Metal Jerry Can (KEROSENE)
PRO1157	20L AFAC Pipeline Grey Metal Jerry Can (2 Stroke 50:1)
PRO1158	20L AFAC Black Metal Jerry Can (OIL)
PRO1159	20L AFAC Nut Brown Metal Jerry Can (BIO DIESEL)
<b>Pro-Quip A.F.A.C. Fuel Containers – 10 Lt</b>	
PRO1096	10L AFAC Red Metal Jerry Can (UNLEADED)
PRO1160	10L AFAC Orange Metal Jerry Can (ETHANOL)
PRO1161	10L AFAC Olive Yellow Metal Jerry Can (DIESEL)
PRO1162	10L AFAC Bottle Green Metal Jerry Can (2 Stroke 25:1)
PRO1163	10L AFAC Shamrock Green Metal Jerry Can (Drip Torch)
PRO1164	10L AFAC Bluebell Metal Jerry Can (AD Blue)
PRO1165	10L AFAC Bright Blue Metal Jerry Can (Chain & Bar Oil)
PRO1166	10L AFAC Powder Blue Metal Jerry Can (KEROSENE)
PRO1168	10L AFAC Pipeline Grey Metal Jerry Can (2 Stroke 50:1)
PRO1169	10L AFAC Black Metal Jerry Can (OIL)
PRO1170	10L AFAC Nut Brown Metal Jerry Can (BIO DIESEL)
<b>Pro-Quip A.F.A.C. Fuel Labels</b>	
PRO1040	Fuel Can Identification Tag - UNLEADED - Red
PRO1041	Fuel Can Identification Tag - DIESEL - Olive Yellow
PRO1042	Fuel Can Identification Tag - 25:1 - 2 Stroke - Bottle Green
PRO1043	Fuel Can Identification Tag - 50:1 - 2 Stroke - Grey
PRO1044	Fuel Can Identification Tag - Drip Torch - Shamrock Green
PRO1045	Fuel Can Identification Tag - Chain & Bar Oil - Blue
PRO1046	Fuel Can Identification Tag - OIL - Black
PRO1047	Fuel Tag Identification Tag - Mist Blue - Drinking Water
PRO1048	Fuel Tag Identification Tag - Unprinted - Clear
PRO1049	Fuel Tag Identification Tag - AD Blue - Bluebell
PRO1050	Fuel Tag Identification Tag - KEROSENE - Powder Blue
PRO1051	Fuel Tag Identification Tag - ETHANOL - Orange
PRO1052	Fuel Tag Identification Tag - BIO DIESEL - Nut Brown
<b>Pro-Quip – Pourer (Suit Pro-Quip 5, 10 &amp; 20 Lt)</b>	
PRO0993C	Jerry Can Pourer - Carded



## Fire Pumps & Repairs

<b>Part #</b>	<b>Product Description</b>
<b>Repairs &amp; Service</b>	
Darley Repair	<b>Full Repair Service to Darley Pump</b> <i>Appliance Pick up &amp; Delivery Available!</i>
GAAM Repair	<b>Full Repair Service to GAAM Pump</b> <i>Appliance Pick up &amp; Delivery Available!</i>
Waterous Repair	<b>Full Repair Service to Waterous Pump</b> <i>Appliance Pick up &amp; Delivery Available!</i>
<b>New Pumps</b>	
	<b>Firefighter® on Petrol Engine</b> <b>(Single or Twin Impellor) Recoil or Electric Start.</b>
	Firefighter® on Diesel Engine (Single or Twin Impellor)
	<b>Transfer / Quick Fill on Petrol Engine</b> <b>Recoil or Electric Start.</b>
	Transfer / Quick Fill on Diesel Engine
Pumps can be made to your specification. <ul style="list-style-type: none"> <li>• Valves (Ball / Gate / 3 Way)</li> <li>• Fittings (SAFB / Storz / Forestry)</li> <li>• Foam Systems</li> </ul>	

**Full repair service available using only Genuine Parts** \*When available.



**Twin Impellor**  
(Fire Service Ready)

**Transfer / Quick Fill**  
(Fire Service Ready)

**Full Repair service on all Fire  
 Service Pumps & Foam Systems**  
*Appliance P/up & Delivery Available!*



## Road Safety & Hazard Tapes

Part #	Product Description
<b>Traffic Control / Road Safety Products</b>	
FTA-9883P-CFS-2XL	C.F.S. 2XL Tabard with Velcro waist for panel attachment CFS - Fire & Rescue Reflective Print, 3M Reflective Tape
FTA-9883P-CFS-3XL	C.F.S. 3XL Tabard with Velcro waist for panel attachment CFS - Fire & Rescue Reflective Print, 3M Reflective Tape
FTA-0918P-IC/ML	Double Sided Panel (Each) - Suit CFS Tabard - 3M Reflective Print (Incident Controller / Media Liaison)
FTA-0918P-SC/OO	Double Sided Panel (Each) - Suit CFS Tabard - 3M Reflective Print (Sector Commander / Operations Officer)
FTA-0918P-STL/DC	Double Sided Panel (Each) - Suit CFS Tabard - 3M Reflective Print (Strike Team Leader / Divisional Commander)
10216	Traffic Cone - 450mm Height with Class 1 Reflective Band
10219	Traffic Cone - 700mm Height with Class 1 Reflective Band
RD-SIGN	Road Sign - Collapsible, Traffic Accident Ahead - 40 - Prepare To Stop
B540R	Foreman LED Baton 2 Red Flash patterns
EF-AT730	E-Flare - AT730 Red / Blue - Flashing Road Beacon
EF-PACK-RB	E-Flare - 4 x AT730 Red / Blue - Flashing Road Beacons in Bag
<b>Hazard &amp; Flagging Tapes</b>	
11491	Hazard Warning Tape - 75mm x 75m - Red / White Diagonal Stripe
11492	Hazard Warning Tape - 75mm x 75m - Yellow / Black Diagonal Stripe
N-FT-KIT	<b>Flagging Tape Kit – Consists of the following items:</b> <ul style="list-style-type: none"> <li>• Hazard Warning Tape - 75mm x 75m - Red / White Diagonal Stripe</li> <li>• Flagging Tape - Fluro Yellow 25mm x 75m</li> <li>• Flagging Tape - Fluro Orange 25mm x 75m</li> <li>• Flagging Tape - Fluro Pink 25mm x 75m</li> <li>• Flagging Tape - Fluro Green 25mm x 75m</li> <li>• Flagging Tape - Fluro Blue 25mm x 75m</li> <li>• Flagging Tape - Diagonal Striped Yellow / Black 25mm x 45m</li> </ul>
11382	Flagging Tape - Fluro Yellow 25mm x 75m
11383	Flagging Tape - Fluro Orange 25mm x 75m
11384	Flagging Tape - Fluro Pink 25mm x 75m
11392	Flagging Tape - Fluro Green 25mm x 75m
11393	Flagging Tape - Fluro Blue 25mm x 75m
FTA-FT2590-YB	Flagging Tape - Diagonal Striped Yellow / Black 25mm x 75m
FT-BOX	Flagging Tape - Box - Holds all Flagging Tapes and 1 x Hazard Tape



## First Aid & Patient Care

Part #	Product Description
<b>First Aid Kits</b>	
CFS13464	CFS - Fire First Aid Kit in Red Bag
CFS13500	Kit Empty - Red Trauma Response – Red Bag Only
<b>Basket Stretchers</b>	
FWE71	Ferno - 71 Basket Stretcher
FWETAB	Ferno - Traverse Advantage Basket Stretcher
FWETBG	Ferno - Traverse Gazelle Basket Stretcher
<b>Extrication Boards</b>	
389RB	DHS - Rescue Board (Short)
390CF	DHS - Carbon Fibre Spine-board
390BAR	DHS - Bariatric Spine-board

**Ferno – Model 71  
FWE71**



**Ferno – Traverse  
Advantage  
Basket Stretcher  
FWETAB**



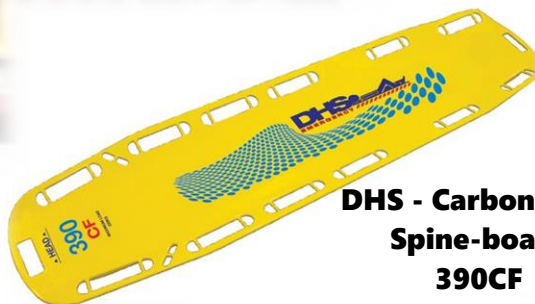
**Ferno – Traverse  
Gazelle Basket  
Stretcher  
FWETBG**



**DHS - Rescue Board  
(Short)  
389RB**



**DHS - Carbon Fibre  
Spine-board  
390CF**



**DHS - Bariatric  
Spine-board  
390BAR**





## Hand Tools

Part #	Product Description
<b>Hand Tools</b>	
631849	Rake-hoe – Fire Fighting Tool - Cyclone
PFL45G	Fire Control Drip Torch – 5 Litre Capacity – Shamrock Green
<b>Various other hand tools available upon request.</b>	
	<ul style="list-style-type: none"> <li>Broom (Industrial) Various sizes &amp; bristles available</li> <li>Long Handle Spade - Cyclone</li> <li>Long Handle Shovel - Cyclone</li> <li>Hammer / Claw – 20oz (566g)</li> <li>Bolt Cutters:</li> <li>Drop Forged Jaws - Tubular Handles (24" 610mm) Cutting Cap 5/16" (7.9mm)</li> <li>Shovel - All Steel construction - 'D' Handle</li> <li>Shovel - Long Handle</li> <li>Axe - 2Kg - Hickory Handle</li> <li>1800mm x 30mm Fence Bar (Crow Bar) - Hexagonal Shaft - Mumme -(5FB180030)</li> <li>10lb (4.54Kg) Sledge Hammer - 900mm Wooden Handle- Mumme -(5HSH10)</li> <li>600mm x 20mm Wrecking Bar (Jemmy Bar) – HEXAGON - Mumme -(5WB60020)</li> </ul>



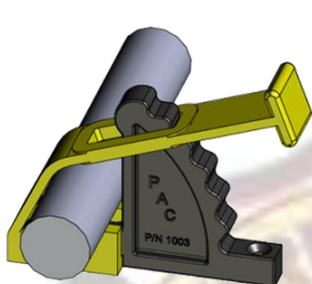
## Foam Concentrates

Part #	Product Description
<b>Class 'A' – USDA Certified</b>	
	FIRE-BRAKE™ Foam - 1% Concentrated 20lt Green Pail, Environmentally Friendly
<b>Class 'B' – Environmentally Guaranteed</b>	
	RE-HEALING™ Foam – 3% or 6% 20lt Blue Pail, 205Lt Drum, 1000Lt Bulk Environmentally Friendly + Environmental Guarantee
<b>High - Expansion</b>	
	SOLBERG® HIGH-EXPANSION Foam 20lt Pail, 205Lt Drum, 1000Lt Bulk - Environmentally Friendly

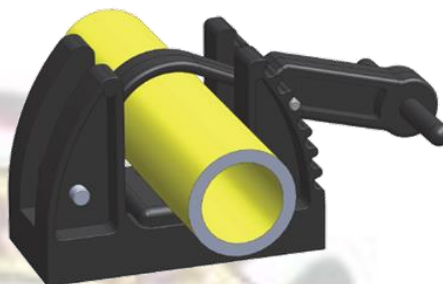


## Appliance Items– Mounting Brackets

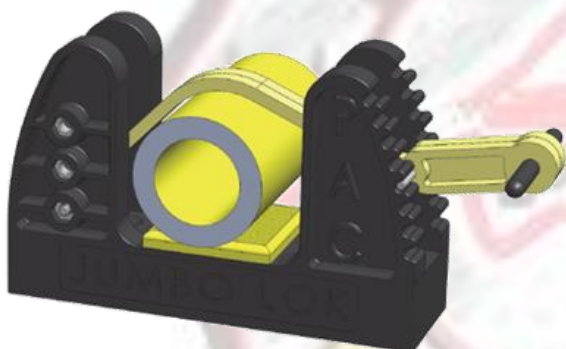
Part #	Product Description
<b>Equipment Clamps</b>	
1003	Toolok 1003 (Hand Tools)
1004Y	Handlelok 1004 (Hose / Pole / Turncock Key)
1070	Jumbo Lok 1070 (Standpipe)



*Toolok 1003 (Hand Tools)*



*Handlelok 1004Y (Hose / Pole / Turncock Key)*



*Jumbo Lok 1070 (Standpipe)*



Call today for all your stowage mounting needs!

- Rescue Tools
- Hand Tools
- Nozzles
- Hoses
- Foam Adaptors / Eductors
- CABA Cylinders
- Fire Extinguishers
- Chain Saws
- Disc Cutters

*\*Many types of clamps available!*

## LED Work Lights

Part #	Product Description
<b>Owl Lighting Australia</b> Operating Volt: 9 ~ 32 Volt DC	
<b>Work Lighting</b>	
OL9005-10	10W / 1pcs*10W CREE LED Work Light (Square Head) Brightness: 10w led @ 900 lumens Waterproof: IP 68
<b>Whelen - Pioneer Nano 3- Super-LED® Work Lighting</b>	
NP3BW	3-LED, with Bail Mount, White Housing - 12 or 24 VDC
NP3BB	3-LED, with Bail Mount, Black Housing - 12 or 24 VDC
<b>Whelen - Pioneer Nano 6- Super-LED® Work Lighting</b>	
NP6BW	6-LED, with Bail Mount, White Housing - 12 or 24 VDC
NP6BB	6-LED, with Bail Mount, Black Housing - 12 or 24 VDC



OL9005-10 - **Owl Lighting Australia**

10W / 1pcs\*10W CREE LED Work Light (Square Head)  
 Brightness: 10w led @ 900 lumens  
 Waterproof: IP 68

**NP3BB**



**NP6BB**



**WHELEN®**

### **Pioneer Nano - Super-LED® Work Lighting**

- Injection moulded polycarbonate optic lenses are hard-coated to minimize environmental damage from sand, sun, salt, and road chemicals
- Die-cast aluminium powder coated housing in Black or White
- 100% solid-state electronics
- Colour temperatures reach 6,000° Kelvin, simulating bright midday light
- Rated to last thousands of hours
- **Models available in 24 Volts**
- Available in 3 or 6 diode models
- 8° spotlight pattern comes standard. Includes additional 40° x 20° flood lens
- Optic lens changes easily via four screws in picture frame fixture
- Powder coated stainless steel bail bracket with 3/8" stud carriage bolt mount
- Five-year warranty



# WHELEN® Emergency Lighting

Part #	Product Description
<b>Whelen – Pioneer - Super-LED® Scene Lighting</b>	
MPPBBS	12VDC Low Profile Pedestal/Swivel Mount, Black Housing and On/Off Switch
MPP4BBS	24VDC Low Profile Pedestal/Swivel Mount, Black Housing and On/Off Switch
MPP4BCS	24VDC Low Profile Pedestal/Swivel Mount, Chrome Housing and On/Off Switch
MPBB	12VDC Bail/Stud Mount, Black Housing
MPB4B	24VDC Bail/Stud Mount, Black Housing
PELCC	12VDC Perimeter Enhancement Light, White Super-LED®, Chrome Housing
PELCC4	24VDC Perimeter Enhancement Light, White Super-LED®, Chrome Housing
PELBB	12VDC Perimeter Enhancement Light, White Super-LED®, Black Housing
PELBB4	24VDC Perimeter Enhancement Light, White Super-LED®, Black Housing



## MPPBCS

4100 lumens.  
**Weight:** 1.7 lbs.  
12VDC standard, draws 4 amps.  
24VDC models available, draws 2 amps  
**SIZE:**  
Pedestal/Swivel: 8-11/16" (220mm) H x 3-1/4" (82mm) D x 5-1/16" (129mm) W (includes handle)



## PELCC (12VDC)

## PELCC4 (24 VDC)

**12 Volt:** 0.85 amps draw, 1,000 Lumens  
**24 Volt:** 0.370 amps draw, 1,000 Lumens  
Dimensions: 2-1/4" (56mm) H x 7-7/8" (201mm) W x 1-5/8" (42mm) D.



## MPBB

4100 lumens.  
**Weight:** 1.7 lbs.  
12VDC standard, draws 4 amps.  
24VDC models available, draws 2 amps  
**SIZE:**  
Bail/Stud: 4-5/8" (118mm) H (w/bracket) x 2-7/8" (73mm) D x 4-3/4" (121mm) W

*Space limited? Need heavy-duty, over-the-top performance? Here's legendary Pioneer performance in a Pioneer Micro built to fit almost anywhere on your vehicle! With its structural design and innovative optic technology, Whelen's Pioneer Series Super-LED work lights are reliable and efficient. Models are available in a variety of sizes, optics, and mounting options for every application*



## LED Driving Lights

Part #	Product Description
<b>Owl Lighting Australia</b> Operating Volt: 9 ~ 32 Volt DC	
<b>Round Driving Lights</b>	
OL9002-70	6 inch 70w Round LED Driving / Spot Light LED's: CREE LEDs x 7pcs * 10w high power Brightness: 6300 Lumens Waterproof: IP 68
OL7140	7 inch 140w Round LED Driving Spot Light LEDs: CREE LEDs x 28pcs * 5w high power Brightness: 12000 Lumens Waterproof: IP 68
OL9029-185	9 inch 185w Round LED Driving Light LEDs: CREE LEDs x 37pcs * 5w High Intensity Brightness: 16800 Lumens Waterproof: IP 68



### OL9002-70

6 inch 70w Round LED Driving / Spot Light  
 LED's: CREE LEDs x 7pcs \* 10w high power  
 Brightness: 6300 Lumens  
 Waterproof: IP 68



### OL7140

7inch 140w Round LED Driving Spot Light  
 LEDs: CREE LEDs x 28pcs \* 5w high power  
 Brightness: 12000 Lumens  
 Waterproof: IP 68



### OL9029-185

9inch 185w Round LED Driving Light  
 LEDs: CREE LEDs x 37pcs \* 5w High Intensity  
 Brightness: 16800 Lumens  
 Waterproof: IP 68

## LED Driving Light Bars

Part #	Product Description
<b>Owl Lighting Australia</b> <b>Operating Volt: 9 ~ 32 Volt DC</b>	
OL8011-180 (30 inch)	OWLLIGHTS Single row LED light bar ( <b>180 Watt</b> ) Size: <b>30 inch</b> (725mm L x 60mm H x 90mm D) LED's: 10w CREE LED chips Colour temperature: 6000K Waterproof: IP 68
OL8011-120 (20 inch)	OWLLIGHTS Single row LED light bar ( <b>120 Watt</b> ) Size: <b>20 inch</b> (515mm L x 60mm H x 90mm D) LED's: 10w CREE LED chips. Colour temperature: 6000K Waterproof: IP 68
OL8011-100 (17 inch)	OWLLIGHTS Single row LED light bar ( <b>100 Watt</b> ) Size: <b>17 inch</b> (445mm L x 60mm H x 90mm D) LED's: 10w CREE LED chips. Colour temperature: 6000K Waterproof: IP 68
OL8011-60 (11 inch)	OWLLIGHTS Single row LED light bar ( <b>60 Watt</b> ) Size: <b>11 inch</b> (280mm L x 60mm H x 90mm D) LED's: 10w CREE LED chips. Colour temperature: 6000K Waterproof: IP 68
OL8011-40 (8 inch)	OWLLIGHTS Single row LED light bar ( <b>40 Watt</b> ) Size: <b>8 inch</b> (200mm L x 60mm H x 90mm D) LED's: 10w CREE LED chips. Colour temperature: 6000K Waterproof: IP 68
OL8011-20 (5 inch)	OWLLIGHTS Single Row LED light bar ( <b>20 Watt</b> ) Size: <b>5 inch</b> (120mm L x 60mm H x 90mm D) LED's: 10w CREE LED chips. Colour temperature: 6000K Waterproof: IP 68



OL8011-180 (30 inch)



OL8011-120 (20 inch)



OL8011-100 (17 inch)



OL8011-60 (11 inch)



OL8011-40 (8 inch)



OL8011-20 (5 inch)

# **WHELEN®** Emergency Lighting



**Whelen - High Brightness LED Light-heads & Light-bars can be synchronised and all have various flash patterns suited to your application.**

**Whelen - Tested to have no RF interference with other electrical products.**



# WHELEN® Emergency Lighting

Part #	Product Description
<b>Whelen Lighting</b>	
<b>Light Bars – Full Length</b>	
	<b>Edge® Freedom® Series Super-LED® Light bars.</b> 44.5" to 72" (1135mm x 1835mm) <b>Various Models Available</b>
	<b>Legacy® Colour Series Super-LED®</b> Slim line 44" to 54" (1122mm x 1377mm) <b>Various Models Available</b>
	<b>Liberty™ II, Low Current Series</b> 44" to 54" (1122mm x 1377mm) <b>Various Models Available</b>
	<b>Justice® Series Super-LED®</b> Slim line 44.4" to 62.375" (1132mm x 1590mm) <b>Various Models Available</b>
	<b>Century™ Elite Series LED Light bars</b> 44" to 50" (1122mm x 1275mm) <b>Various Models Available</b>
	<b>NFPA Edge® Freedom® IV F4N Low Current DYAD™ Series Linear Super-LED® Light bars</b> 55" to 72" (1403mm x 1836mm) <b>Various Models Available</b>

*Edge® Freedom® IV F4W We Can® Series Super-LED® Light bars*



*Legacy® GB We Can® DUO+™ Colour Series Super-LED®*



*Liberty™ II, SOLO™ IX & IG Low Current Series*



\*Please see the latest Whelen Catalogue for various options.

\*Custom builds also available

# WHELEN® Emergency Lighting

Part #	Product Description
<b>Whelen Justice® Series Super-LED®</b>	
<b>Made to Order Light bars</b>	
<b>Light Bars – Full Length</b>	
	Justice® Series Super-LED® Slim line 44.4" to 62.375" (1132mm x 1590mm) Various Models Available

## Full Personal Design option!

- CHOOSE YOUR LENGTH
- CHOOSE YOUR COLOURED LED'S
- CHOOSE YOUR LENSE COLOURS
- AVAILABLE WITH LED ALLEY LIGHTS
- MULTIPLE FLASH PATTERNS



**JUSTICE 44" (1122mm)**  
**JUSTICE 50" (1275mm)**  
**JUSTICE 56" (1428mm)**  
**JUSTICE 62" (1581mm)**

**\*Made to order!**



# WHELEN® Emergency Lighting

Part #	Product Description
<b>Whelen Lighting</b>	
<b>Light Bars – Mini</b>	
MC11PR (Perm, Mount RED)	Century™ Series LED Mini Light bar Various Mounting Options (Permanent / Magnetic / Stud) <b>11" – RED – 12 or 24VDC</b>
MC11PB (Perm, Mount BLUE)	Century™ Series LED Mini Light bar Various Mounting Options (Permanent / Magnetic / Stud) <b>11" – BLUE – 12 or 24VDC</b>
MC16PR (Perm, Mount RED)	Century™ Series LED Mini Light bar Various Mounting Options (Permanent / Magnetic / Stud) <b>16" – RED – 12 or 24VDC</b> <b>-SUIT REPLACEMENT OF APPLIANCE ROTATING LIGHTS – LOW CURRENT DRAW.</b>
MC16PB (Perm, Mount BLUE)	Century™ Series LED Mini Light bar Various Mounting Options (Permanent / Magnetic / Stud) <b>16" – BLUE – 12 or 24VDC</b> <b>-SUIT REPLACEMENT OF APPLIANCE ROTATING LIGHTS – LOW CURRENT DRAW.</b>
MC16PJ (Permanent, Mount RED / BLUE)	Century™ Series LED Mini Light bar <b>16", Permanent Mount, 1 x Side Red, 1 x Side Blue with Clear Dome</b> <b>-SUIT REAR OF APPLIANCE-</b>
MC16VJ (Magnetic, Mount RED / BLUE)	Century™ Series LED Mini Light bar <b>16", Magnetic/Suction Mount, 1 x Side Red, 1 x Side Blue with Clear Dome</b> <b>C/W - straight cable and cigar plug with on/off switch and pattern selection switch.</b>
MC23PR	Century™ Series LED Mini Light bar Various Mounting Options (Permanent / Magnetic / Stud) <b>23" – RED – 12 or 24VDC</b>
MC23PB	Century™ Series LED Mini Light bar Various Mounting Options (Permanent / Magnetic / Stud) <b>23" – BLUE – 12 or 24VDC</b>

## Century™ Series LED Mini Light bar



**MC11PA (11" Amber)**  
Pictured



**MC16VJ (16" Red / Blue)**  
Pictured



**MC16PB & MC16PR**  
**16" Red / 16" Blue Pictured**



**MC23VA (16" Amber)**  
**Magnetic Mount and cigar plug Pictured**



# WHELEN® Emergency Lighting

Part #	Product Description
<b>Whelen Lighting – 24 Volt DC</b>	
<b>M2 Series Linear Super-LED® Surface Mount</b>	
M2RC24	M2 Series LED <b>RED</b> / CLEAR Lens – 24V
M2BC24	M2 Series LED <b>BLUE</b> / CLEAR Lens – 24V
<b>M4 Series Linear Super-LED® Surface Mount</b>	
M4RC24	M4 Series LED <b>RED</b> / CLEAR lens – 24V
M4BC24	M4 Series LED <b>BLUE</b> / CLEAR lens – 24V
M4BRUSH	M4 Series – Brush Guard
<b>M6 Series Linear Super-LED® Surface Mount</b>	
M6RC24	M6 Series LED <b>RED</b> / CLEAR Lens – 12V
M6BC24	M6 Series LED <b>BLUE</b> / CLEAR Lens – 24V
M6BRUSH	M6 Series – Brush Guard
<b>M9 Series Linear Super-LED® Surface Mount</b>	
M9RC24	M9 Series LED <b>RED</b> / CLEAR Lens – 24V
M9BC24	M9 Series LED <b>BLUE</b> / CLEAR Lens – 24V

**M2 Series**



**M4 Series**

*\*Optional Brush Guard Fitted*



**RED, BLUE or  
CLEAR** Lenses  
Available

**M6 Series**

*\*Optional Brush Guard Fitted*



**RED, BLUE or  
CLEAR** Lenses  
Available

**M9 Series**

*\*Optional Brush Guard Fitted*



**RED, BLUE or  
CLEAR** Lenses  
Available

- **M SERIES High Brightness LED.**
- **Also have (Fire-ground / Park) Dim Function on this series.**

# WHELEN® Emergency Lighting

Part #	Product Description
<b>Whelen Lighting – 12 Volt DC</b>	
<b>500 Series Linear Super-LED® Light heads</b>	
5V3R	500 Series LED <b>RED</b> / CLEAR Lens – 12V
5V3B	500 Series LED <b>BLUE</b> / CLEAR Lens – 12V
<b>M2 Series Super-LED® Surface Mount</b>	
M2R	M2 Series LED <b>RED</b> – 12V
M2B	M2 Series LED <b>BLUE</b> – 12V
<b>M4 Series Linear Super-LED® Surface Mount</b>	
M4R	M4 Series LED <b>RED</b> – 12V
M4B	M4 Series LED <b>BLUE</b> – 12V



## M2 Series Super-LED® Surface Mount

With a unique lens shape and patented Linear-LED® designed reflector assembly, M Series light heads are completely illuminated for unmatched high intensity warning and low current consumption.

## M4 Series Super-LED® Surface Mount

Multiple Scan-Lock™ flash patterns, many being California Title XIII compliant. Meets KKK-1822F, NFPA 1901, NFPA 1917, SAE, and EC65 specifications

### Size with flange:

3-3/8" (89mm) H x 1-3/8" (36mm) D x 5-1/2" (139mm) L



## 500 Series Linear Super-LED®

V-Series™, Combination 180° Warning, Take Down and Puddle Light Combination with Scan-Lock™ Warning Flash Patterns, Red, Blue, Amber or White Warning

- **M SERIES High Brightness LED.**
- **Also have (Fire-ground / Park) Dim Function on this series.**

# WHELEN® Emergency Lighting

Part #	Product Description
<b>Whelen - Super-LED® Beacons - Amber, Blue, Red or White</b>	
<b>L41 Series Super-LED® Beacon</b>	
L21AP	<b>Amber</b> (Single Colour Only) Flat Mount. 12 VDC
<b>L41 Series Super-LED® Beacon</b>	
L41AP	<b>Amber</b> (Single Colour Only) Flat Mount. 12 / 24VDC
L41RP	<b>Red</b> (Single Colour Only) Flat Mount. 12 / 24VDC
L41BP	<b>Blue</b> (Single Colour Only) Flat Mount. 12 / 24VDC
L41CP	<b>Clear / White</b> (Single Colour Only) Flat Mount. 12 / 24VDC
<b>L32 Series Super-LED® Beacon, Low Dome - Cast Aluminum Base Class 1 in Amber and Class 2 in Red &amp; Blue.</b>	
L32LAF4	<b>Amber</b> (Single Colour Only) Flat Mount, 24 VDC
L32LRF4	<b>Red</b> (Single Colour Only) Flat Mount, 24 VDC
L32LBF4	<b>Blue</b> (Single Colour Only) Flat Mount, 24 VDC
L32LCF4	<b>Clear / White</b> (Single Colour Only) Flat Mount, 24 VDC

## L41 Series Super-LED® Beacon

Available in:  
**Amber**  
**Red**  
**Blue**  
**Clear / White**



**L41 Series**  
(Fitted with Additional Brush Guard)



**RED, BLUE or  
CLEAR Lenses  
Available**



## L21 Series

\* **Amber** Pictured



## L32 Series

\* **Amber** Pictured





# WHELEN® Emergency Lighting

Part #	Product Description
<b>Pioneer – 3000 Series Scene Lighting</b>	
	Bottom Mount Push-Up 12" Outer Body
	Bottom Mount Push-Up 20" Outer Body
<b>Pioneer™ Series and Pioneer Plus™ Series</b>	
	Single Panel Pioneer Plus™ Floodlight
	New! Single Panel Pioneer™ Combination Flood/Spot
	Pioneer Plus™ Max Combination Flood and 8° Spotlight



*Ideal for RCR /  
Structural Fire /  
Emergency Lighting!*

- ✓ **Pioneer Series simulates bright midday summer sunlight.**
- ✓ **No ultraviolet light to attract insects during night-time operation.**

Now you can upgrade your outdated halogen or HID lighting. Floodlights available in a multiple of voltages: 12, 24 VDC and Spotlight and combination Spotlight/Floodlight models.

**\*Please see the latest Whelen Catalogue for various options.**

**\*Custom builds also available**

# WHELEN® Emergency Warning

Part #	Product Description
<b>Whelen Siren Units</b>	
<b>Sirens, Switches &amp; Speakers</b>	
WSSC30	WSSC Series Siren, Combination Siren/Speaker
WSSPA30	WSSC Series Siren, Combination Siren/Speaker, Inc. Public Address
WSSMSW3	Motorcycle Switch 3-Functions for Siren, Air Horn and Lighting
WSSC30HK	Harness Kit for Synchronization of two WSSC30s
GAMMA2	<b>Gamma™ Siren Series</b>



Heavy-duty, compact 30-watt amplified siren ideal for use on motorcycles, ATVs, snow mobiles, etc. Hands-free operation lets you keep both hands steering while accessing warning tones. Choose from four modes of operation and ten tones.

- Combination siren and speaker in a single compact unit. Hands-free operation for Wail and Yelp tones.
- Air horn switch produces air horn as a main tone plus override tone.  
Two way "L" mounting bracket.
- Rugged aluminum housing plus water-resistant connectors for vibration and moisture resistance.
- Model WSSPA30 with Public Address and includes plug-in microphone.
- Requires two customer supplied switches.



## WSSMSW3

Motorcycle Switch, 3-Functions for Siren, Air Horn and Lighting (5-amp Max)

**Size:** 4.31" (110mm) H x 5.44" (138mm) W x 4.625" (118mm) D



## GAMMA2

Hands-Free Siren with Two Auxiliary Switches.

Meets SAE Class A sound requirements when used with most 100 watt speakers.

Twenty-three Scan-Lock™ siren tones.

Two On/Off 20 amp auxiliary rocker switches with LED "On" indicators, control auxiliary equipment (Beacons, Hide-A-Ways, etc.).

Stand-by button provides Hands-Free operation/override from horn ring.


Tone button activates Wail tone (may be programmed for other tones).

Manual button generates a variety of tones as pre-selected by user, up to 3 tones.

Horn button generates an Air horn tone.

Easy to install with standard bail-strap mounting bracket.

## Intercom / P.A. Systems

Part #	Product Description
 <b>Australian Made Intercom / PA Systems</b>	
850-0900	Intercom / PA System - 12-24 VDC - 50-watt output
850-0950	Intercom / PA System - 12-24 VDC - 50-watt output (CFA Version)



### **Intercom / PA System 12-24 VDC - 50-watt output (CFA Version)**

- Compact master control usually located in vehicle cabin
- Remote mounted, speaker / microphone allows workers to communicate with driver
- Master control features quality hands free microphone



### **Intercom / PA System 12-24 VDC - 50-watt output**

- High quality purpose designed two-way communication device
- Compact master control usually located in vehicle cabin
- Remote mounted, speaker / microphone allows workers to communicate with driver
- Master control features quality push to talk microphone

Australian Made product, designed to meet the rugged needs of local government and contract business's. The intercom system provides communication between the driver of the vehicle and workman at a remote location, such as the rear of the vehicle. Unique call and warning tones add to the features of this unit. The systems are popular with emergency services, and throughout the road maintenance and construction industries.

\*The CFA version offers hands-free operation from within the cabin.





## Siren Speakers & Siren Units

Part #	Product Description
<b>Siren Speakers</b>	
D100B	11 Ohm, 100 Watt Speaker – Suitable for Most vehicle siren units
D100R	11 Ohm, 100 Watt Speaker – Suitable for Most vehicle siren units
SA315P	<b>Whelen</b> - 11 Ohm, 100 Watt Speaker - Nylon Composite
SAK9	<b>Whelen</b> - Heavy-Duty Universal/Swivel Bail Type Mounting Bracket
<b>Siren Units</b>	
SA 361	12 VDC, 100 Watt, Remote Head Controller
SA365	12 VDC, 100 Watt, Compact Controller - Console Mount
SA385	12 VDC, 100 Watt, Alert / Multi Tone + P.A.- Console Mount
SA400	12 – 24 VDC 100/200 Watt, Alert / Multi Tone + P.A.- Console Mount
SA500	12 – 24 VDC 100/200 Watt, Alert / Multi Tone + P.A.- Console Mount
SA441	12 VDC - 200 Watt, Alert / Multi Tone + P.A.- Remote Mount
295SL102	<b>Whelen</b> - 295SL Series, Full Function Siren, <b>24 VDC</b> (up to Two 100 Watt speakers), Includes Microphone
ALPHASL	<b>Whelen</b> – Siren Unit Only, 12 VDC, 100/200 Watt, Multi Tone + Horn. <b>*Requires Alpha 1 or 2 Switches</b>
ALPHA1	<b>Whelen</b> - Single On/Off Switch for use with Hands-Free Operation
ALPHA2	<b>Whelen</b> - Single On/Off Switch for use with Hands-Free Operation Plus, Momentary Switch for Air Horn.

### D100B

11 Ohm, 100 Watt  
Speaker



### D100R

11 Ohm, 100 Watt  
Speaker



**SA315P - Whelen** - 11 Ohm, 100 Watt Speaker  
123dB Speaker, Nylon Composite - Smaller size speaker with full size performance will mount in more locations than ever before. The SA315P installs easily and delivers traffic clearing warning where it's needed: down and in front of your vehicle. Complies with OSHA 1910.95 guidelines regarding "Permissible Noise Exposure".



### SA315P

\*Requires SAK9 – Mounting Bracket

### ALPHASL

Remote Siren, for use with Remote Switches (Purchased Separately), Selectable Four Tone Hands-Free Siren, For a Single 100 Watt



**Remote Switches for Alpha™ Siren Series**  
Quality Hands Free and momentary switches for sirens and air horn. Contact F.T.A. for details.

## Town / Fire Station Sirens

Part #	Product Description
<b>SIRENCO (Industrial/Fire Station Sirens)</b>	
FTA-1500S	1.5Km 240V Single End Siren
FTA-2D	2Km 240v Double Ended Siren
FTA-3S	3Km 240v Single Ended Siren
FTA-5S	5Km 240v OR 415v Single End Siren
FTA-10S	10Km 415v Single Ended Siren
FTA-15D	15Km 415v Double Ended Siren



## Notes:

